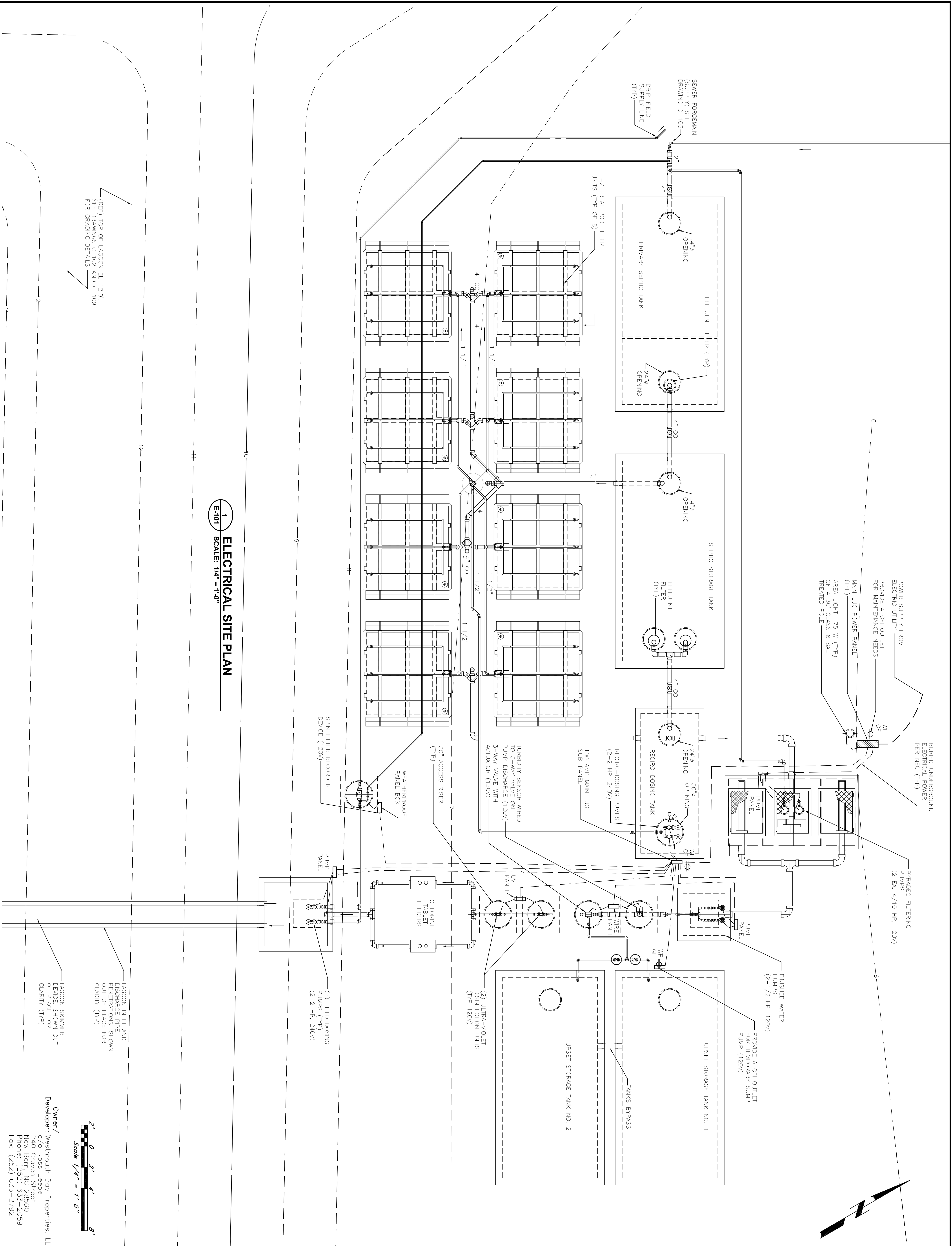


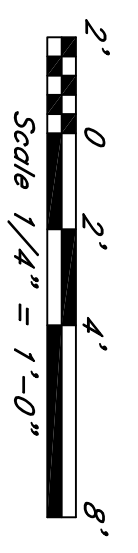
NOTES:

1. MECHANICAL DRAWINGS SHALL BE USED IN CONJUNCTION WITH CIVIL, STRUCTURAL, AND ELECTRICAL DRAWINGS. THE SHOP DRAWINGS PROVIDED BY THE EQUIPMENT MFG. S, AS WELL AS THE CONTRACT SPECIFICATIONS, ARE REQUIRED BY THE DRAWINGS.
2. OUTDOOR ELEC. EQUIPMENT TO BE NEMA 4X OR AS REQUIRED BY THE DRAWINGS.
3. ELEC. CONDUIT TO BE SCHED. PVC, SUNLIGHT RESISTANT UNLESS OTHERWISE NOTED.
4. USE MOTOR CONTROL PANELS OR COMBINATION MOTOR CONTROLLERS FOR MOTORS. EACH MOTOR TO HAVE A DISCONNECT, OVERLOAD PROTECTION, AND SHORT CIRCUIT PROTECTION. ALL MOTOR CONTROLLERS TO BE MOUNTED ON A 30" CLASS 6 SAUT TREATED POLE.
5. CABLE TO BE TYPE THHW OR XHHW COPPER EXCEPT AS NOTED.
6. ELEC. CONTRACTOR TO CONFIRM AND COORDINATE WITH THE ELECTRIC UTILITY TO DETERMINE THE CORRECT SIZE AND LOCATION FOR THE METERING EQUIPMENT.
7. PROVIDE GROUNDING AND BONDING PER THE NATIONAL ELECTRIC CODE. ELECTRICAL CONTRACTOR TO RECORD GROUNDING ELECTRODE RESISTANCE.
8. BREAKERS FOR HIGH PRESSURE SOLIUM & METAL HALIDE LIGHTING CIRCUITS ARE TO BE LISTED AS SWITCHING DUTY RATED, AND HIGH INTENSITY DISCHARGE RATED.
9. CONTRACTOR TO PROVIDE APPROPRIATE JUNCTION BOXES AS NEEDED.
10. RECEPTACLES TO BE 20 AMP, INDUSTRIAL GRADE, OUTDOOR RECEPTACLES TO BE MOUNTED IN WEATHERPROOF COVERS.
11. CONTRACTOR TO PROVIDE APPROPRIATE JUNCTION BOXES FOR LIGHTING FIXTURES, AND APPROPRIATE JUNCTION BOXES FOR SERVICE PLATFORMS. ALL SERVICE PLATFORMS TO BE DRAWINGS, JUNCTION STRUT AND MOUNTING HARDWARE TO BE THE 304 STAINLESS STEEL.
12. INSTALL ONE 20 AMP GFI, WP, OUTDOOR RECEPTACLE AT EACH SHOW LOCATION.



1 ELECTRICAL SITE PLAN
SCALE: 1/4" = 1'-0"

(REF.) TOP OF LAGOON EL. 12.0'
SEE DRAWINGS C-102 AND C-109
FOR GRADING DETAILS



Owner/
Developer: Westmouth Bay Properties, LLC
c/o Ross Beabe
240 Croven Street
New Bern, NC 28550
Phone: (252) 653-2059
Fax: (252) 653-2792

<p>MacCONNELL & Associates, P. C. 909 AVIATION PARKWAY, SUITE 1400 P. O. BOX 129 MORRISVILLE, NORTH CAROLINA 27560 TEL: (919) 467-1239 FAX: (919) 319-6510</p>	
<p>WESTMOUTH BAY PROPERTIES, LLC</p>	
<p>WESTMOUTH HARBOR SUBD.</p>	
<p>WASTEWATER TREATMENT & IRRIGATION SYSTEM</p>	
<p>CARTERET COUNTY, NC</p>	
<p>ELECTRICAL SITE PLAN</p>	
PROJECT NUMBER	DRAWING NUMBER
A31002.00	E-101